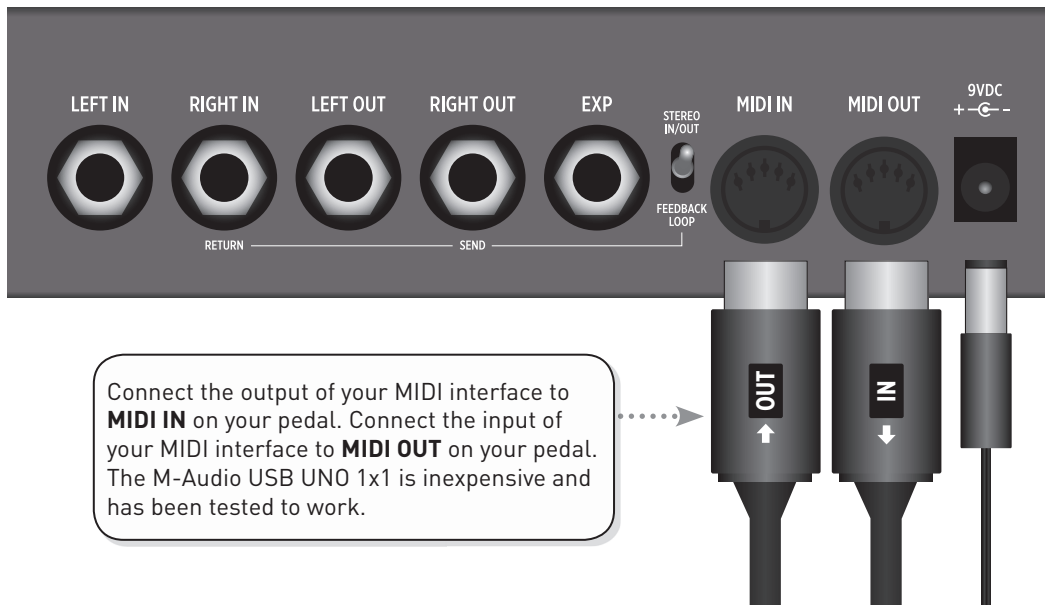


Firmware updates for TimeLine, Mobius, and BigSky are supported via MIDI SYSEX.

WHAT YOU WILL NEED TO UPDATE: A Mac or PC with a MIDI interface. A program capable of sending MIDI sysex data. (Sysex Librarian on the Mac and SendSX on the PC)

1. CONNECT MIDI AND POWER



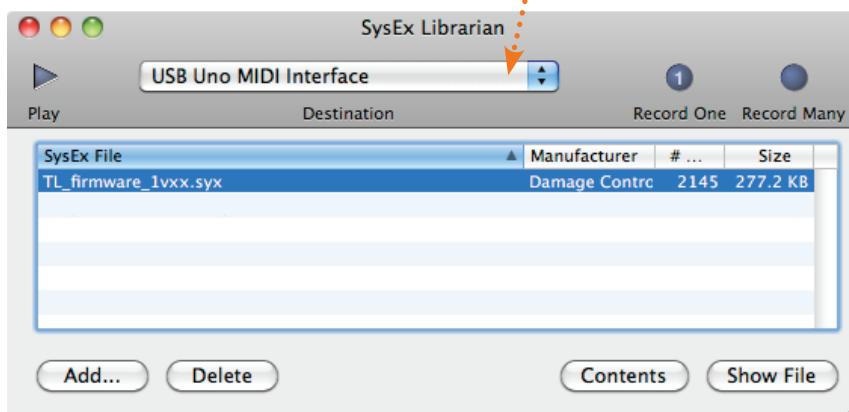
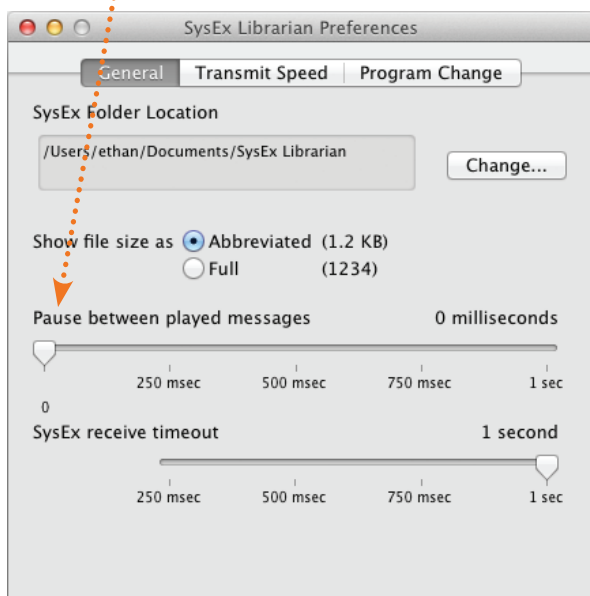
>> Make sure to install the latest drivers for your MIDI interface before attempting to update! <<

2. UPDATE

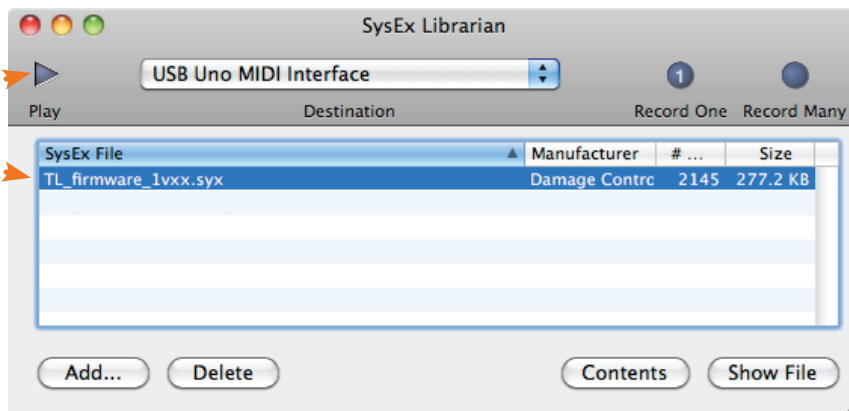
ON A MAC: Download and install **Sysex Librarian** <http://www.snoize.com/SysexLibrarian/>
(Sysex Librarian is Free & Open Source software)

Set the preference for "Pause between played messages" to 0.

Drag the update files into the SysEx Librarian main window and select your MIDI interface in the pull down menu.



Select the **firmware** file and press play.



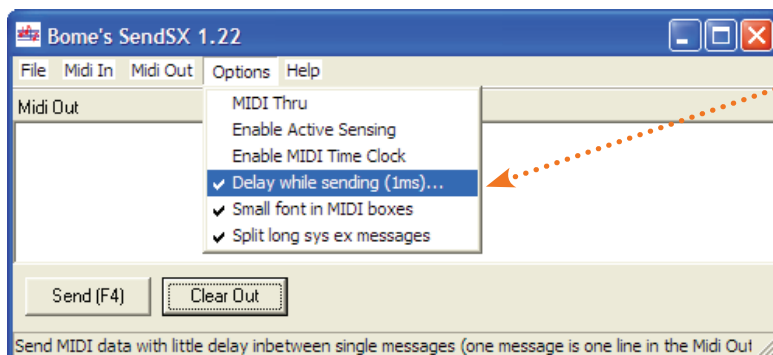
000000
will be displayed while the new firmware is loading

BANK 70
your pedal will restart and display the last active bank when the update is complete

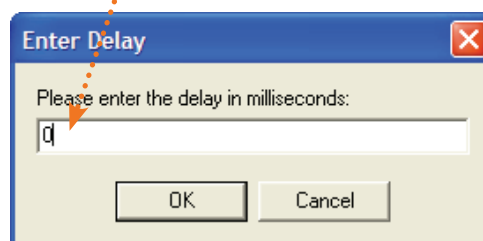
>> Your firmware should now have been updated successfully <<

ON A PC: Download and install **SendSX** <http://www.bome.com/products/sendsx>

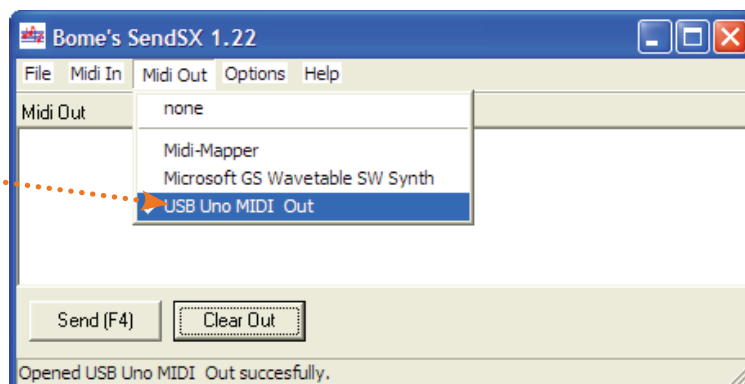
(SendSX is not free software, per their website <http://www.bome.com/products/sendsx/purchase> SendSX can be used for a reasonable trial period for free and then it's asked that development is supported by a voluntary donation or by using it as "postcardware" and sending a postcard)



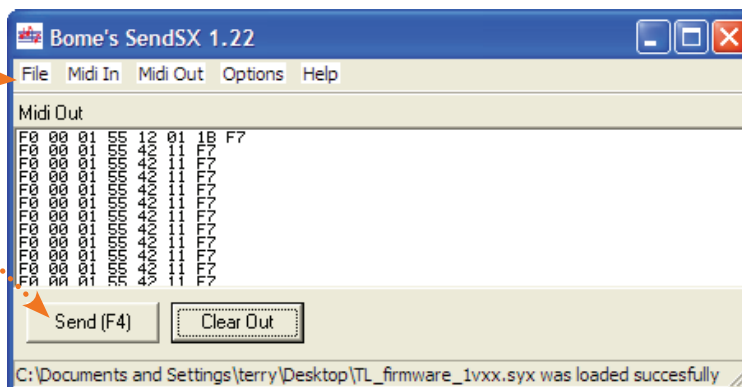
Set the in-between message delay to 0ms



Select the **correct MIDI output** from your MIDI interface.



Open the firmware file and press send.



will be displayed while the new firmware is loading

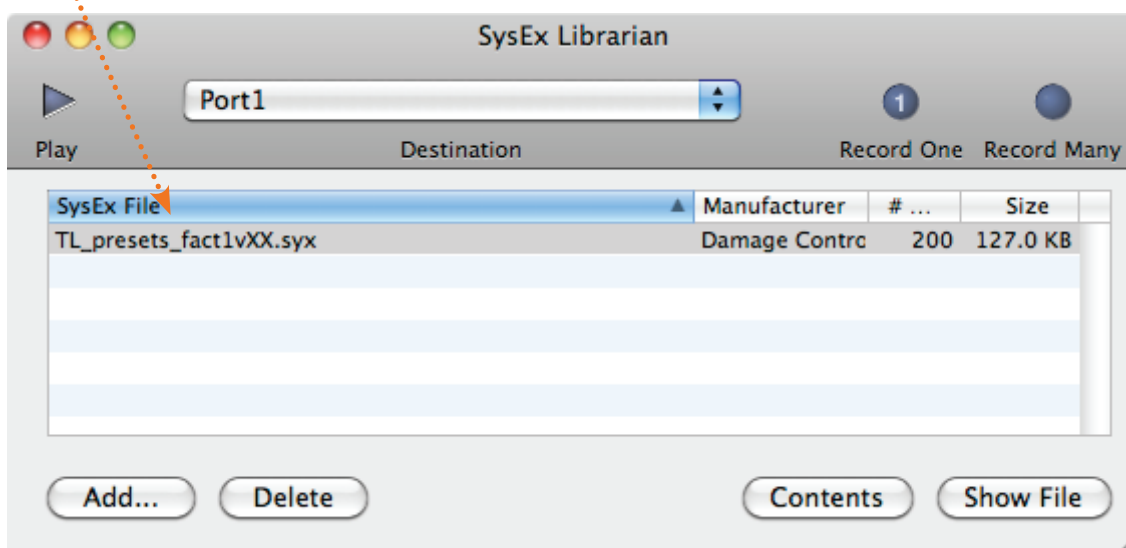


the unit will restart and display the last active bank when the update is complete

>> Your firmware should now have been updated successfully <<

3. UPDATE YOUR FACTORY PRESETS:

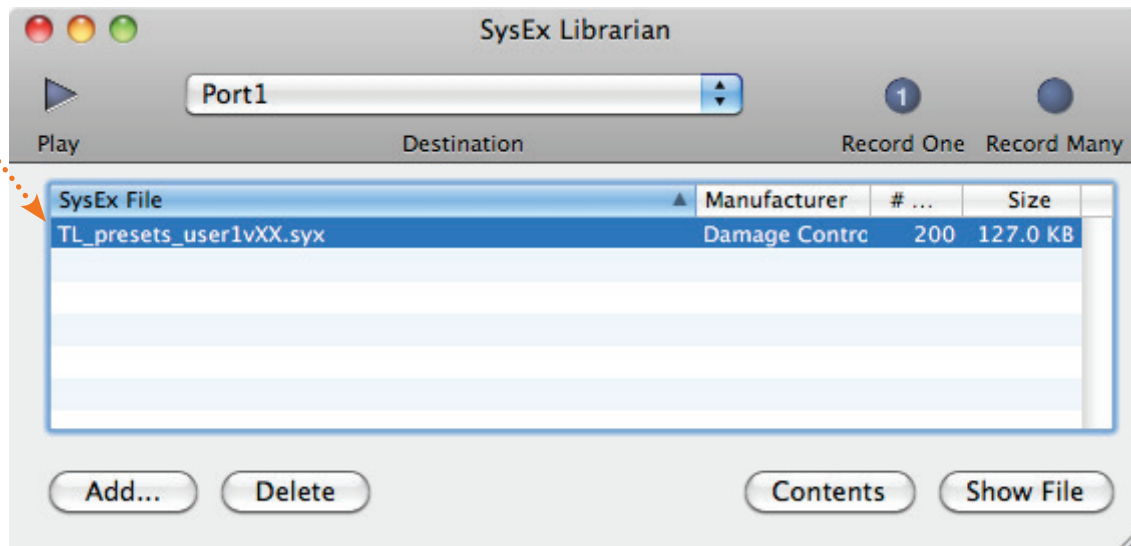
PLAY THE FACTORY PRESET SYSEX FILE: Use either Sysex Librarian on the Mac or SendSX on the PC to send the factory preset sysex file to your TimeLine, Mobius, or BigSky. There will not be any indication on the display that the file is being received. This contains the factory presets and will not alter any of your saved patches unless a factory initialization is performed. The file is included in the update zip archive.



4. (OPTIONAL) UPDATE YOUR PRESETS:

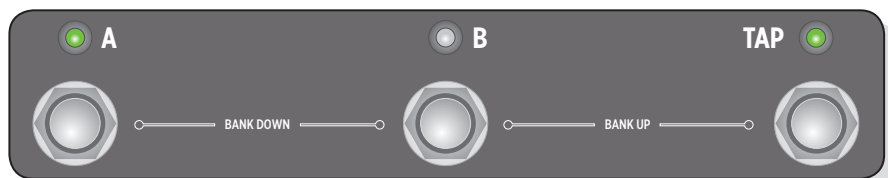
>> **WARNING: the step below will ERASE any edits you've made to ALL presets <<**

PLAY THE USER PRESET SYSEX FILE: Use either Sysex Librarian on the Mac or SendSX on the PC to send the user preset sysex file to your TimeLine, Mobius, or BigSky. The display will read SUCCESS after each preset upload. This will update ALL presets and ERASE any edits you've made.



5. (OPTIONAL) INITIALIZE YOUR USER PRESETS:

>> **WARNING: the step below will ERASE ALL user presets in ALL BANKS <<**



REINIT will be displayed and all factory patches will automatically be restored

POWER UP while holding A & TAP (TimeLine and Mobius) or A & C (BigSky). Keep holding for 5 seconds.

6. (OPTIONAL) CHECK THE FIRMWARE VERSION:

