

**strymon**<sup>®</sup>

**SECONDARY CONTROLS  
& POWER UP MODES**

**QUICK START GUIDE**



CONTENTS (CLICK TO NAVIGATE)			
LARGE FORMAT PEDALS	MEDIUM FORMAT PEDALS		SMALL FORMAT PEDALS
<div>NIGHTSKY time-warped reverberator</div>	<div>blueSky — reverberator —</div>	<div>COMPADRE dual voice compressor &amp; boost</div>	<div>BRIG — dBucket delay —</div>
<div>VOLANTE — Magnetic Echo Machine —</div>	<div>DECO — tape saturation &amp; doubletracker —</div>	<div>DIG dual digital delay</div>	<div>cloudburst — ambient reverb —</div>
	<div>El Capistan dTape Echo</div>	<div>FLINT — tremolo &amp; reverb —</div>	<div>ULTRAVIOLET — vintage vibe —</div>
	<div>IRIDIUM — amp &amp; ir cab —</div>	<div>Lex rotary</div>	
	<div>Riverside — multistage drive —</div>	<div>SUNSET — dual overdrive —</div>	
	<div>ZEZAH — multidimensional phaser —</div>		



strymon®

# NIGHTSKY

time-warped reverberator

QUICK START GUIDE

FULL MANUAL

PRODUCT SUPPORT

CONTACT

▼ LIVE EDIT MODE (SECONDARY CONTROLS) ▼

▼ POWER UP MODES ▼



## 1. SEQUENCER MIDI CLOCK

See full manual (below) for details.

## 2. INFINITE INPUT

Determines if input signal will be processed by reverb while Infinite is active. Press and hold TARGET button and turn REVERB knob to adjust. Preset button 1 will show On (green) or Off (red).

## 3. PRE-DELAY

Adjusts time between dry signal and onset of the reverb. Press and hold TEXTURE button and turn REVERB knob to adjust.

## 4. SCALE SELECT

Selects one of eight scales that determine the intervals when Quantize is set to Scale Mode. Press and hold QUANTIZE button and choose scale via FAVORITE buttons 1-8. See full manual (below) for details.

## 5. MIDI EXPRESSION

See full manual (below) for details.

## 6. LOW PASS RESONANCE

Adjusts the filter Q, or sharpness of the resonant frequency. Press and hold FILTER button and turn REVERB knob to adjust.

## 7. GLIMMER GAIN

Adjusts the sensitivity of the glimmer effect to the input signal. Press and hold GLIMMER button and turn REVERB knob to adjust.

## 8. DRIVE GAIN

Adjusts the sensitivity of the drive effect. Press and hold the DRIVE button and turn the REVERB knob to adjust.

**NOTE:** All Live Edit functions are saved *per preset*.

Press and hold the **INFINITE** footswitch while connecting power to the pedal. Once the three footswitch LEDs light up, release the footswitch. Make desired changes and press any footswitch to exit and apply. Power up functions persist through power cycles and are not saved per preset.



## 1. SET MIDI CHANNEL

See full manual (below) for details.

## 2. TRS MIDI OUTPUT

This determines what kind of MIDI data is sent out of NightSky's TRS MIDI output. See full manual (below) for more details.

## 3. EXP JACK CONFIG

This sets the function of the rear panel's EXP/MIDI jack to be one of the following mode options. See full manual (below) for details.

- Expression Pedal Mode (green)
- MIDI Mode (blue)
- Preset Up/Down Mode (red)
- MOD/TONE/VOICE Bypass Mode (white)

## 4. BYPASS MODE

Press Preset Button 1 to set to True Bypass (green) or Buffered Bypass (red).

## 5. PERSIST/SPILLOVER

Press Preset Button 2 to Enable (green) or Disable (red) spillover. *Note: Enabling will engage Buffered Bypass Mode.*

## 6. SEND MIDI CC

See full manual (below) for details.

## 7. MIDI PROGRAM CHANGE

See full manual (below) for details.

## 8. 5 PIN DIN MIDI THROUGH

See full manual (below) for details.

BACK TO TOP ▲



strymon®

# VOLANTE

Magnetic Echo Machine

QUICK START GUIDE

FULL MANUAL

PRODUCT SUPPORT

CONTACT

## LIVE EDIT MODE (SECONDARY CONTROLS)

To access these functions, press and hold **FEEDBACK** buttons 1 and 4 together (outlined in white below) while turning assigned knobs. All Live Edit functions are saved per preset.



### 1. MIDI CLOCK SYNC

See full manual (below) for details.

### 2. PAUSE RAMP SPEED

Turning the MECHANICS knob to the left makes the pause ramp more slowly. Turning the knob to the right makes the pause ramp more quickly.

### 3. SOS REPEAT LEVEL

Turning the REPEATS knob to the left decreases number of SOS loop repeats. Turning the knob to the right increases the number of SOS loop repeats.

### 4. SOS LOOP LEVEL

Turning the ECHO LEVEL knob to the left turns down the SOS loop volume. Turning knob to the right turns up SOS loop volume.

### 5. RESPOND/IGNORE MIDI EXPRESSION

See full manual (below) for details.

### 6. SPRING DECAY

Turning the SPRING knob to the left shortens the spring reverb decay. Turning knob to the right provides longer reverb decay.

## POWER UP MODES

Press and hold the **TAP** footswitch while connecting power to the pedal. Make desired changes and press **TAP** footswitch to exit and apply. Power up functions persist through power cycles and are not saved per preset.



### 1. SET MIDI CHANNEL

See full manual (below) for details.

### 2. TRS MIDI OUTPUT

See full manual (below) for details.

### 3. EXP CONFIGURATION

Sets the current mode for the Expression jack. TAP LED color indicates selection. See the full manual (below) for details.

- Expression Pedal Mode (green)
- External Tap Mode (amber)
- Preset Mode (blue)
- Speed Mode (purple)
- Transport Mode (red)
- SOS Looper Mode (white)

### 4. SEND MIDI CC

See full manual (below) for details.

### 5. MIDI PROGRAM CHANGE

See full manual (below) for details.

### 6. DIN MIDI THROUGH

See full manual (below) for details.

### 7. BYPASS MODE

Press to set to True Bypass (green) or Buffered Bypass (red).

### 8. SPILLOVER

Press to Enable (green) or Disable (red) Spillover. **Note:** Enabling switches to Buffered Bypass mode.

### 9. OUTPUT SUM ON/OFF

Press for stereo output (green, default) or summed mono (red).

### 10. KILL DRY

Press to set dry signal not present (green) or to have dry signal present (red, default).

BACK TO TOP ▲



strymon®

# blueSky

— reverberator

QUICK START GUIDE

FULL MANUAL

PRODUCT SUPPORT

CONTACT

## LIVE EDIT MODE (SECONDARY CONTROLS)

Press and hold the **ON** footswitch to enter Live Edit mode for Secondary Function control. Once both LEDs flash, release the footswitch. While adjusting, LED(s) will change color to indicate current setting. After making the desired changes, press **ON** to exit and save settings.



### 1. RESPOND/IGNORE MIDI EXPRESSION

When set to MIDI mode, this setting determines whether blueSky will respond to MIDI Expression to control the knob settings in the same manner as a TRS Expression pedal. *See full manual (below) for details.*

### 2. BOOST/CUT

Boosts or cuts the volume by 3dB when the pedal is engaged. Turn knob to select -3dB (green) or +3dB (amber). Unity gain is at the 12 o'clock position and is blueSky's default setting.

## POWER UP MODES

Press and hold the **ON** footswitch while powering up blueSky (unless otherwise noted). Once both LEDs flash, release the footswitch. After making desired changes, press either footswitch to exit and save settings. Changes persist through power cycles and are not saved per preset.



### 1. INPUT LEVEL

Sets the input level mode to instrument (green) for input sources like guitar or bass, or line (red) for sources such as keyboards or synths. 10dB of headroom is added.

### 2. SPILLOVER MODE

Disables (amber) or enables (purple) Spillover Mode, allowing repeats to “Spill” into bypass or next selected preset. *Note: When engaged, blueSky will automatically switch to Buffered Bypass Mode.*

### 3A. BYPASS MODE

Sets bypass mode to True Bypass (green) or Buffered Bypass (red).

### 3B. EXP/MIDI JACK CONFIG

Press and hold the **FAV** footswitch while powering up blueSky.

This sets the function of the rear panel's EXP/MIDI jack to be one of the following mode options. For more information and setup details, see full manual.

- Expression Pedal mode (green)
- Favorite mode (amber)
- MIDI mode (blue)

BACK TO TOP ▲





# COMPADRE

dual voice compressor & boost

QUICK START GUIDE

FULL MANUAL

PRODUCT SUPPORT

CONTACT



## POWER UP MODES

Press and hold the **COMP** footswitch while powering up Compadre. Once both LEDs flash, release the footswitch. After making desired changes, press either footswitch to exit and save settings. Changes persist through power cycles and are not saved per preset.



### 1. FAV/MIDI CONFIG

Select the mode of the FAV/MIDI jack on the rear panel for external control of Compadre. Boost LED color will indicate selection.

Set to FAV mode (red) to connect MiniSwitch or another external latching footswitch with a TRS cable to store and recall your Favorite setting.

Set to MIDI mode (blue) to access 300 presets and remotely control patch parameters via MIDI.

### 2. BYPASS MODE

Set to True Bypass (green), Auto Bypass (amber) or Buffered Bypass (red). Comp LED color will indicate selection.

**Note:** In Auto Bypass, Compadre is True Bypass unless a Volume Pedal is connected, which switches Compadre to Buffered Bypass.

Setting Compadre to Buffered Bypass mode preserves the high frequency response of your guitar signal through your pedal chain and long cable runs.

BACK TO TOP ▲



strymon®

# DECO

— tape saturation & doubletracker

QUICK START GUIDE

FULL MANUAL

PRODUCT SUPPORT

CONTACT

## LIVE EDIT MODE (SECONDARY CONTROLS)

Press and hold **Tape Saturation ON** footswitch to enter Live Edit mode for Secondary Function control. Once both LEDs flash, release the footswitch. While adjusting, LED(s) will change color to indicate current setting. After making desired changes, press either footswitch to exit and save settings.



### 1. MIDI EXPRESSION

See full manual (below) for details.

### 2. MIDI CLOCK SYNC

See full manual (below) for details.

### 3. AUTO-FLANGE TIME

Sets the sweep time for the Auto-Flange effect to fast (green) or slow (amber). Default is 12 o'clock. **Note:** The Auto-Flange is triggered by pressing and holding the **DOUBLETRACKER ON** footswitch.

### 4. LOW TRIM

Adjusts the low end from full bandwidth (green, default) to high pass filtering applied (amber).

### 5. DOUBLETRACKER BOOST/CUT

Adjusts the Doubletracker level to -3dB cut (green) or +3dB boost (amber). Default is at 12 o'clock for unity gain, no boost/cut applied.

### 6. WIDE STEREO MODE

Sends Reference Deck signal to left output and Lag Deck signal to right outputs creating a wide stereo image. Set to Off (green, default) or On (red). Use BLEND knob as a pan control by adjusting the relative levels of the decks.

**Note:** This feature is disabled when using Mono output.

## POWER UP MODES

Press and hold **Doubletracker ON** footswitch while powering up Deco (unless otherwise noted). Once both LEDs flash, release footswitch. After making desired changes, press either footswitch to exit and save settings. Changes persist through power cycles and are not saved per preset.



### 1. INPUT LEVEL

Sets the Tape Saturation input level mode to NORMAL (green, default) for input sources like guitar or bass, or STUDIO (red) for sources like keyboards or synths. 10dB of headroom is added.

### 2A. BYPASS MODE

Sets bypass mode to True Bypass (green) or Buffered Bypass (red).

### 2B. EXP/MIDI JACK CONFIG

Press and hold the **Tape Saturation ON** footswitch while powering up Deco to access.

This sets the function of the rear panel's EXP/MIDI jack to be one of the following mode options. For more information and setup details, see full manual.

- Expression Pedal mode (green)
- Favorite mode (amber)
- Tap mode (red)
- MIDI mode (blue)

BACK TO TOP ▲



strymon®

# DIG

dual digital delay

QUICK START GUIDE

FULL MANUAL

PRODUCT SUPPORT

CONTACT

## LIVE EDIT MODE (SECONDARY CONTROLS)

Press and hold the **ON** footswitch to enter Live Edit mode for Secondary Function control. Once both LEDs flash, release the footswitch. While adjusting, LED(s) will change color to indicate current setting. After making the desired changes, press **ON** to exit and save settings.



### 1. DELAY SUBDIVISION

Sets the subdivision to Dotted Eighth note (green), Quarter note (amber, default) or Half note (red). TAP LED light indicates selection.

### 2. MIDI EXPRESSION

See full manual (below) for details.

### 3. MIDI CLOCK SYNC

See full manual (below) for details.

### 4. DRY LEVEL

Manually adjusts dry level. No dry (green) to unity with input (amber), set blue to control dry/wet levels with Mix and Mix 2 knobs. Both LEDs will indicate selection.

### 5. SYNC/FREE MODE

Enables (green) or disables (red) time sync between Delay 1 and Delay 2. Both LEDs indicate selection.

### 6. DELAY 2 REPEATS/SYNC

Sets number of repeats for Delay 2 (Green to Amber) or set to track REPEATS setting for Delay 1 (red). Both LEDs indicate selection.

### 7. DUAL DELAY CONFIG

Sets dual delay configuration to Series (green, default), Ping Pong (amber) or Parallel (red). The ON LED light indicates selection.

## POWER UP MODES

Press and hold the **ON** footswitch while powering up DIG (unless otherwise noted). Once both LEDs flash, release the footswitch. After making desired changes, press either footswitch to exit and save settings. Changes persist through power cycles and are not saved per preset.



### 1. INPUT LEVEL

Sets the input level mode to instrument (green) for input sources like guitar or bass, or line (red) for sources such as keyboards or synths. 10dB of headroom is added.

### 2. SPILLOVER MODE

Disables (amber, default) or enables (purple) Spillover Mode, allowing repeats to “Spill” into bypass or next selected preset. *Note: When engaged, DIG will automatically switch to Buffered Bypass Mode.*

### 3A. BYPASS MODE

Sets bypass mode to True Bypass (green) or Buffered Bypass (red).

### 3B. EXP/MIDI JACK CONFIG

Press and hold the **TAP** footswitch while powering up DIG to access.

This sets the function of the rear panel’s EXP/MIDI jack to be one of the following mode options. For more information and setup details, see full manual.

- Expression Pedal mode (green)
- Favorite mode (amber)
- Tap mode (red)
- MIDI mode (blue)

BACK TO TOP ▲



strymon®

# El Capistan

dTape Echo

QUICK START GUIDE

FULL MANUAL

PRODUCT SUPPORT

CONTACT

## LIVE EDIT MODE (SECONDARY CONTROLS)

Press and hold the **ON** footswitch to enter Live Edit mode for Secondary Function control. Once both LEDs flash, release the footswitch. While adjusting, LED(s) will change color to indicate current setting. After making the desired changes, press **ON** to exit and save settings.



### 1. MIDI EXPRESSION

See full manual (below) for details.

### 2. MIDI CLOCK SYNC

See full manual (below) for details.

### 3. BOOST/CUT

Smoothly apply a -3dB cut (green) up to a +3dB boost (amber). Unity gain is at 12 o'clock (default).

### 4. TAPE CRINKLE

Smoothly adjust the condition of tape from fresh (green) to mangled (amber). Default is 12 o'clock.

### 5. LOW END CONTOUR

Smoothly adjust low end from enhanced (green) to reduced (amber). Default is 12 o'clock.

### 6. TAPE BIAS

Adjusts the tape machine bias, from under-biased (green) to over-biased (amber).

**NOTE:** Higher bias levels result in reduced echo volume and limited headroom with dirty sounding repeats. Lower bias settings result in the cleanest echoes with the most headroom.

## POWER UP MODES

Press and hold the **ON** footswitch while powering up El Capistan (unless otherwise noted). Once both LEDs flash, release the footswitch. After making desired changes, press either footswitch to exit and save settings. Changes persist through power cycles and are not saved per preset.



### 1. INPUT LEVEL

Sets the input level mode to instrument (green) for input sources like guitar or bass, or line (red) for sources such as keyboards or synths. 10dB of headroom is added.

### 2. SPILLOVER MODE

Disables (amber) or enables (purple) Spillover Mode, allowing repeats to “Spill” into bypass or next selected preset. *Note: When engaged, DIG will automatically switch to Buffered Bypass Mode.*

### 3A. BYPASS MODE

Sets bypass mode to True Bypass (green) or Buffered Bypass (red).

### 3B. EXP/MIDI JACK CONFIG

Press and hold the **TAP** footswitch while powering up El Capistan.

This sets the function of the rear panel’s EXP/MIDI jack to be one of the following mode options. For more information and setup details, see full manual.

- Expression Pedal mode (green)
- Favorite mode (amber)
- Tap mode (red)
- MIDI mode (blue)

BACK TO TOP ▲



strymon®

# FLINT

— tremolo & reverb

QUICK START GUIDE

FULL MANUAL

PRODUCT SUPPORT

CONTACT

## LIVE EDIT MODE (SECONDARY CONTROLS)

Press and hold the **Reverb ON** footswitch to enter Live Edit mode for Secondary Function control. Once both LEDs flash, release the footswitch. While adjusting, LED(s) will change color to indicate current setting. After making the desired changes, press **ON** to exit and save settings.



### 1. TREMOLO BOOST/CUT

Smoothly apply a -3dB cut (green) up to a +3dB boost (amber). Unity gain is at 12 o'clock (default).

### 2. MIDI EXPRESSION

See full manual (below) for details.

### 3. MIDI CLOCK SYNC

See full manual (below) for details.

### 4. REVERB BOOST/CUT

Smoothly apply a -3dB cut (green) up to a +3dB boost (amber). Unity gain is at 12 o'clock (default).

### 5. TAP DIVISION

Sets tap tempo note sub-division for the Tremolo LFO when external TAP footswitch is used. Set to 1/16 (red), triplet (amber), 1/8 (green) or 1/4 (blue, default).

### 6. EFFECT ORDER

Set internal effect order to Reverb into Tremolo (green, default) or Tremolo into Reverb (red).

### 7. REVERB PRE-DELAY

Smoothly adjust the amount of Reverb Pre-Delay from minimum (green) to maximum (amber).

## POWER UP MODES

Press and hold **REVERB ON** footswitch while powering up Flint (unless otherwise noted). Once both LEDs flash, release the footswitch. After making desired changes, press either footswitch to exit and save settings. Changes persist through power cycles and are not saved per preset.



### 1. INPUT LEVEL

Sets the input level mode to instrument (green) for input sources like guitar or bass, or line (red) for sources such as keyboards or synths. 10dB of headroom is added.

### 2. SPILLOVER MODE

Disables (amber) or enables (purple) Spillover Mode, allowing repeats to “Spill” into bypass or next selected preset. *Note: When engaged, Flint will automatically switch to Buffered Bypass Mode.*

### 3A. BYPASS MODE

Sets bypass mode to True Bypass (green) or Buffered Bypass (red).

### 3B. EXP/MIDI JACK CONFIG

Press and hold **TREMOLLO ON** while powering up Flint to access.

This sets the function of the rear panel's EXP/MIDI jack to be one of the following mode options. For more information and setup details, see full manual.

- Expression Pedal mode (green)
- Favorite mode (amber)
- Tap mode (red)
- MIDI mode (blue)

BACK TO TOP ▲





**IRIDIUM**  
— amp & ir cab —

## QUICK START GUIDE

# FULL MANUAL

## PRODUCT SUPPORT

## CONTACT

## LIVE EDIT MODE (SECONDARY CONTROLS)

Press and hold the **ON** footswitch to enter Live Edit mode for Secondary Function control. Once both LEDs flash, release the footswitch. While adjusting, LED(s) will change color to indicate current setting. After making the desired changes, press **ON** to exit and save settings.



## 1. AMP DISABLE

Allows you to disable amp processing and utilize Iridium's other features for other input sources, such as to apply Level, EQ, Room, and non-guitar cab WAV type IRs, such as bass cabs, acoustic instrument body resonance, samples of music, etc.

**Set to Amp Enabled (green, default) or Amp Disabled (amber).**

## 2. LEVEL TRIM

Adjusts the output volume without altering level that is saved to a Favorite setting — useful when monitoring with headphones.

Sweeps from -20dB (green) to +3dB (amber). No boost or cut (red) is at the 12 o'clock position.

### 3. ROOM SIZE

**Adjusts size of the room reverb.  
Set to Small (green), Medium  
(amber, default) or Large (red).**

## POWER UP MODES

Press and hold the **FAV** footswitch while powering up Iridium (unless otherwise noted). Once both LEDs flash, release the footswitch. After making desired changes, press either footswitch to exit and save settings. Changes persist through power cycles and are not saved per preset.



## 1A. INPUT LEVEL

Sets the input level to instrument (green) for sources like guitar or bass, or line (red) for sources such as keyboards or synths. 10dB of headroom is added.

## 2. EXP/MIDI JACK CONFIG

**Sets the function of the rear panel's EXP/MIDI jack. See full manual (below) for details.**

- Expression Pedal mode (green)
- Volume PRE (amber, default)
- Volume POST (red)
- Digital/MIDI (blue)
- External Favorite (purple)

## 1B. OUTPUT MODE

Press and hold the **ON** footswitch while powering up Iridium.

**Amp Bypass mode (green)**  
disables Amp processing, Cab and Room processing are enabled.

**Cab Bypass mode (amber)**  
disables Cab processing, Amp and Room processing are enabled.

**Normal Mode** (red, default)  
enables all processing.



strymon®

*Lex*  
rotary

QUICK START GUIDE

FULL MANUAL

PRODUCT SUPPORT

CONTACT

## LIVE EDIT MODE (SECONDARY CONTROLS)

Press and hold the **ON** footswitch to enter Live Edit mode for Secondary Function control. Once both LEDs flash, release the footswitch. While adjusting, LED(s) will change color to indicate current setting. After making the desired changes, press **ON** to exit and save settings.



### 1. BI-AMP OUTPUT MODE

Disables (green, default) or enables (red) Bi-Amp Output mode rather than the default stereo output. When in Bi-Amp Output mode, the Left output is the woofer signal and the Right output is the horn signal.

### 2. MIDI EXPRESSION

See full manual (below) for details.

### 3. MIDI CLOCK SYNC

See full manual (below) for details.

### 4. CAB FILTER

Optimizes the output signal for use into either the front of a guitar amplifier or into a full range speaker system.

Set to Guitar Amp (green, default) or Full Range system (red). Full range mode is also useful for direct recording scenarios.

## POWER UP MODES

Press and hold the **FAV** footswitch while powering up Lex (unless otherwise noted). Once both LEDs flash, release the footswitch. After making desired changes, press either footswitch to exit and save settings. Changes persist through power cycles and are not saved per preset.



### 1. INPUT LEVEL

Sets the input level mode to instrument (green) for input sources like guitar or bass, or line (red) for sources such as keyboards or synths. 10dB of headroom is added.

### 2A. BYPASS MODE

Sets bypass mode to True Bypass (green), Buffered Bypass (red) or Digital Bypass (blue).

In Digital Bypass, the instrument's bypass signal is routed through DSP for perfectly seamless transitions when engaging and disengaging the effect.

### 2B. EXP/MIDI JACK CONFIG

Press and hold the **SLOW/FAST** footswitch while powering up Lex.

This sets the function of the rear panel's EXP/MIDI jack to be one of the following mode options. For more information and setup details, see full manual.

- Expression Pedal mode (green)
- External Speed Switch (purple)
- Favorite Mode (amber)
- Tap mode (red)
- MIDI mode (blue)

BACK TO TOP ▲



strymon®

# Riverside

multistage drive

QUICK START GUIDE

FULL MANUAL

PRODUCT SUPPORT

CONTACT

## LIVE EDIT MODE (SECONDARY CONTROLS)

Press and hold the **ON** footswitch to enter Live Edit mode for Secondary Function control. Once both LEDs flash, release the footswitch. While adjusting, LED(s) will change color to indicate current setting. After making the desired changes, press **ON** to exit and save settings.



### 1. NOISE REDUCTION THRESHOLD

Riverside has a variable-threshold noise reduction feature to tame hum and buzz when not playing.

Setting the DRIVE knob lower than the 12 o'clock position disables Noise Reduction (green, default).

Turning the DRIVE knob past 12 o'clock engages and increases the noise reduction threshold for louder and noisier setups. The FAVORITE LED will change from AMBER to RED to indicate the increased noise reduction.

### 2. BOOST LEVEL

Turn the LEVEL knob to set the amount of boost up to +6dB. As you turn the boost amount up, the color of the blinking LED changes from GREEN for low boost settings to RED for high boost settings.

Connect a Strymon MiniSwitch to easily engage/disengage Riverside's Boost.

**NOTE:** The Boost setting is saved globally to the Manual, Favorite, and Bypass settings of Riverside.

## POWER UP MODES

Press and hold **FAVORITE** footswitch while powering up Riverside (unless otherwise noted). Once both LEDs flash, release the footswitch. After making desired changes, press either footswitch to exit and save settings. Changes persist through power cycles and are not saved per preset.



### 1. BOOST JACK MODE

This sets the function of the rear panel's BOOST jack to be one of the following options. For more information and setup details, see full manual.

- Expression Pedal Mode (green)
- Volume Mode (red)
- Favorite OUT Mode (amber)
- Boost Switch (purple, default)

### 2A. BYPASS MODE

Press and hold **ON** while powering up Riverside to access.

Sets bypass mode to True Bypass (green) or Buffered Bypass (red).

### 2B. EXP/MIDI JACK CONFIG

This sets the function of the rear panel's EXP/MIDI jack to be one of the following mode options. For more information and setup details, see full manual.

- Expression Pedal Mode (green)
- Volume Mode (red)
- Favorite IN Mode (amber)
- MIDI Mode (blue)

BACK TO TOP ▲





# SUNSET

— dual overdrive —

QUICK START GUIDE

FULL MANUAL

PRODUCT SUPPORT

CONTACT



## LIVE EDIT MODE (SECONDARY CONTROLS)

Press and hold the **B** footswitch to enter Live Edit mode for Secondary Function control. Once the A LED flashes, release the footswitch. While adjusting, LED(s) will change color to indicate current setting. After making the desired changes, press **B** to exit and save settings.



### 1. NOISE GATE THRESHOLD

While turning the LEVEL knob on the A side, the A LED will change from GREEN to AMBER to indicate the noise gate has been engaged.

Turning LEVEL past 12 o'clock increases the noise gate threshold for louder and noisier setups. The A LED will change from AMBER to RED to indicate the increased noise gate threshold level.



## POWER UP MODES

Press and hold the **A** footswitch while powering up Sunset (unless otherwise noted). Once both LEDs flash, release the footswitch. After making desired changes, press either footswitch to exit and save settings. Changes persist through power cycles and are not saved per preset.



### 1. FAV JACK MODE

Sets the function of the rear panel's FAV jack. *See the full manual (below) for details.*

- Expression Mode (green)
- Volume Mode (red)
- FAV IN Mode (amber, default)

### 2A. BYPASS MODE

Press and hold the **B** footswitch while powering up Sunset.

Set to True Bypass (green, default) or Buffered Bypass (red).

### 2B. EXP JACK MODE

Sets the function of the rear panel's EXP jack. *See the full manual (below) for details.*

- Expression Mode (green)
- Volume Mode (red, default)
- MIDI Mode (blue)

BACK TO TOP ▲



strymon®



QUICK START GUIDE

FULL MANUAL

PRODUCT SUPPORT

CONTACT

## LIVE EDIT MODE (SECONDARY CONTROLS)

Press and hold the **ON (6 Stage)** footswitch to enter Live Edit mode for Secondary Function control. Once both LEDs flash, release the footswitch. While adjusting, LED(s) will change color to indicate current setting. After making the desired changes, press **ON** to exit and save settings.



### 1. BARBER POLARITY

Sets direction of the 4-Stage filter frequency LFO to be continuously falling (red) or rising (blue).

### 2. MIDI CLOCK SYNC

See full manual (below) for details.

### 3. 4-STAGE STEREO SPREAD

Widens the stereo image of the 4-Stage phaser smoothly from narrow (green) to wide (amber).

### 4. MIDI EXPRESSION

See full manual (below) for details.

### 5. SIGNAL ROUTING

Sets the internal signal routing to:

**Series** (green, default) - Output of 6-stage phaser feeds into 4-stage phaser when both are engaged.

**Parallel** (blue) - Output of both phasers is mixed to outputs while retaining stereo independence.

**Split** (red) - Both phasers are mono and sent to separate outs.

### 6. 6-STAGE STEREO SPREAD

Widens 6-Stage stereo image from narrow (green) to wide (amber).

## POWER UP MODES

Press and hold the **ON (6 Stage)** footswitch while powering up Zelzah (unless otherwise noted). Once both LEDs flash, release the footswitch. After desired changes, press either footswitch to exit and save settings. Changes persist through power cycles and are not saved per preset.



### 1. INPUT LEVEL

Sets the input level mode to instrument (green, default) for input sources like guitar or bass, or line (red) for sources such as keyboards or synths. 10dB of headroom is added.

### 2A. BYPASS MODE

Set to True Bypass (green, default) or Buffered Bypass (red).

**Note:** Setting Zelzah to Buffered Bypass mode preserves the high frequency response of your guitar signal through your pedal chain and long cable runs.

### 2B. EXP/MIDI JACK CONFIG

Press and hold the **ON (4-Stage)** footswitch while powering up Zelzah.

This sets the function of the rear panel's EXP/MIDI jack to be one of the following mode options. See full manual (below) for details.

- Expression Pedal Mode (green, default)
- Favorite Mode (amber)
- Tap Mode (red)
- MIDI Mode (blue)

BACK TO TOP ▲



strymon®

# BRIG

— dBucket delay —

QUICK START GUIDE

FULL MANUAL

PRODUCT SUPPORT

CONTACT

## SECONDARY CONTROLS

Our compact designs deliver the premium experience expected of all Strymon pedals, but with unbeatable ease of use. Secondary controls and/or hidden features here are minimal — so you can dial in the perfect sound almost instantly with no fuss.



### ONBOARD TAP TEMPO

Simply Press and hold the footswitch for 1 second to enter (or exit) Onboard Tap Mode and then tap quarter notes to set the delay time. The LED will flash red and blue to indicate the current tempo.

#### 1. TAP SUBDIVISION

Adjust the TIME knob (Example 1) to set the delay subdivision to one of the following options:

- 1) Triplet
- 2) Eighth
- 3) Dotted Eighth
- 4) Quarter (default)

### EXAMPLE 1



**Note:** You can optionally configure an external footswitch for External Tap, Favorite or Infinite Mode functionality. See full manual for details.

## POWER UP MODES

Press and hold the **ON** footswitch for at least 2 seconds while powering up Brig. Once the LED flashes red, release the footswitch. After making the desired changes, press footswitch to exit and save settings. Changes persist through power cycles and are not saved per preset.



### 1. MONO I/O BYPASS MODE

With rear I/O Mode Selector set to MONO, set switch to 3205 or 3005 for True Bypass (green, default) or MULTI for Buffered Bypass (red).

### 2. EXP/MIDI JACK CONFIG

This sets the function of the rear panel's EXP/MIDI jack.

- Expression Pedal mode (green, default)
- Favorite Mode (amber)
- Tap mode (red)
- Infinite Mode (purple)
- MIDI mode (blue)

### 3. DRY SIGNAL CONFIG

Sets dry signal to Digital mode (green, default), Analog mode (red) or Kill Dry mode (blue).

### 4A. SPILLOVER MODE

Allows wet signal to “spill” into bypass or into next preset. Set to Off (amber, default) or On (purple).

### 4B. LED BRIGHTNESS

**NOTE:** After powering up as noted above, hold footswitch again while turning the Mod knob to smoothly adjust the LED brightness.

**NOTE:** The LED will change to reflect any color noted above.

BACK TO TOP ▲





# cloudburst

— ambient reverb —

QUICK START GUIDE

FULL MANUAL

PRODUCT SUPPORT

CONTACT

## SECONDARY CONTROLS

Our compact designs deliver the premium experience expected of all Strymon pedals, but with unbeatable ease of use. Secondary controls and/or hidden features here are minimal — so you can dial in the perfect sound almost instantly with no fuss.



### ENSEMBLE *mp* LEVEL ADJUST MODE

Easily adjust the intensity of the Ensemble effect in the *mp* mode.

Once Cloudburst is powered on, set the Ensemble switch to the *mp* (middle) position.

Press and hold the footswitch for 1 second and release it. You'll see the LED flash RED once.

Adjust the MIX knob to modify the Ensemble level from Off (blue) to On/Low (green) and gradually to the Maximum setting (amber).

Press the footswitch again to save the current setting and exit.

Your configured level is now recalled anytime the Ensemble switch is set to the *mp* position.

The LED will change to reflect any color noted above.

#### NOTE:

Please make sure to only hold the footswitch for 1 second, as holding it for 3+ seconds will enter Cloudburst's Save Mode instead.

## POWER UP MODES

Press and hold the **ON** footswitch for at least 2 seconds while powering up Cloudburst. Once the LED flashes red, release the footswitch. After making the desired changes, press footswitch to exit and save settings. Changes persist through power cycles and are not saved per preset.



### 1. MONO I/O BYPASS MODE

With rear I/O Mode Selector set to MONO, set switch to OFF for True Bypass (green, default) or *forte* for Buffered Bypass (red).

### 2. EXP/MIDI JACK CONFIG

This sets the function of the rear panel's EXP/MIDI jack. For more details, see full manual.

- Expression Pedal mode (green)
- Favorite Mode (amber)
- Freeze mode (red)
- Infinite Mode (purple)
- MIDI mode (blue)

### 3. DRY SIGNAL CONFIG

Sets dry signal to Digital mode (green, default), Analog mode (red) or Kill Dry mode (blue).

### 4. SPILLOVER MODE

Allows wet signal to “spill” into bypass or into next preset. Set to Off (amber, default) or On (purple).

**Note:** The current preset must be active for at least 5 seconds for Spillover between presets to be operational. Spillover is immediately available when bypassing the effect.

**NOTE:** The LED will change to reflect the any color noted above.

BACK TO TOP ▲





QUICK START GUIDE

FULL MANUAL

PRODUCT SUPPORT

CONTACT



## POWER UP MODES

Press and hold the **ON** footswitch for at least 2 seconds while powering up UltraViolet. Once the LED flashes red, release the footswitch. After making the desired changes, press footswitch to exit and save settings. Changes persist through power cycles and are not saved per preset.



### 1. BYPASS MODE

Set BIAS switch to Low for True Bypass (green, default) or High for Buffered Bypass (red).

### 2. EXP/MIDI JACK CONFIG

This sets the function of the rear panel's EXP/MIDI jack. For more details, see full manual.

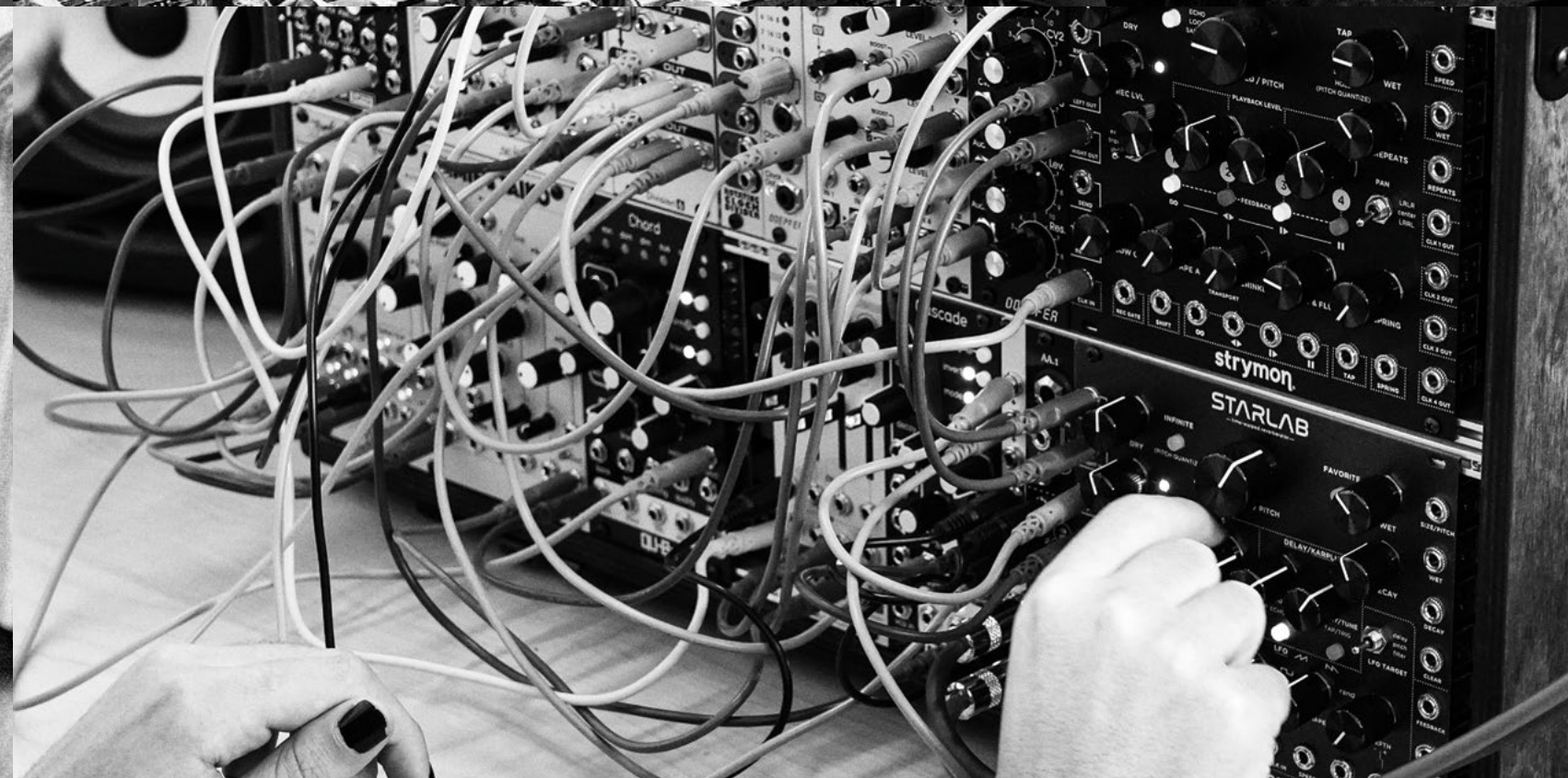
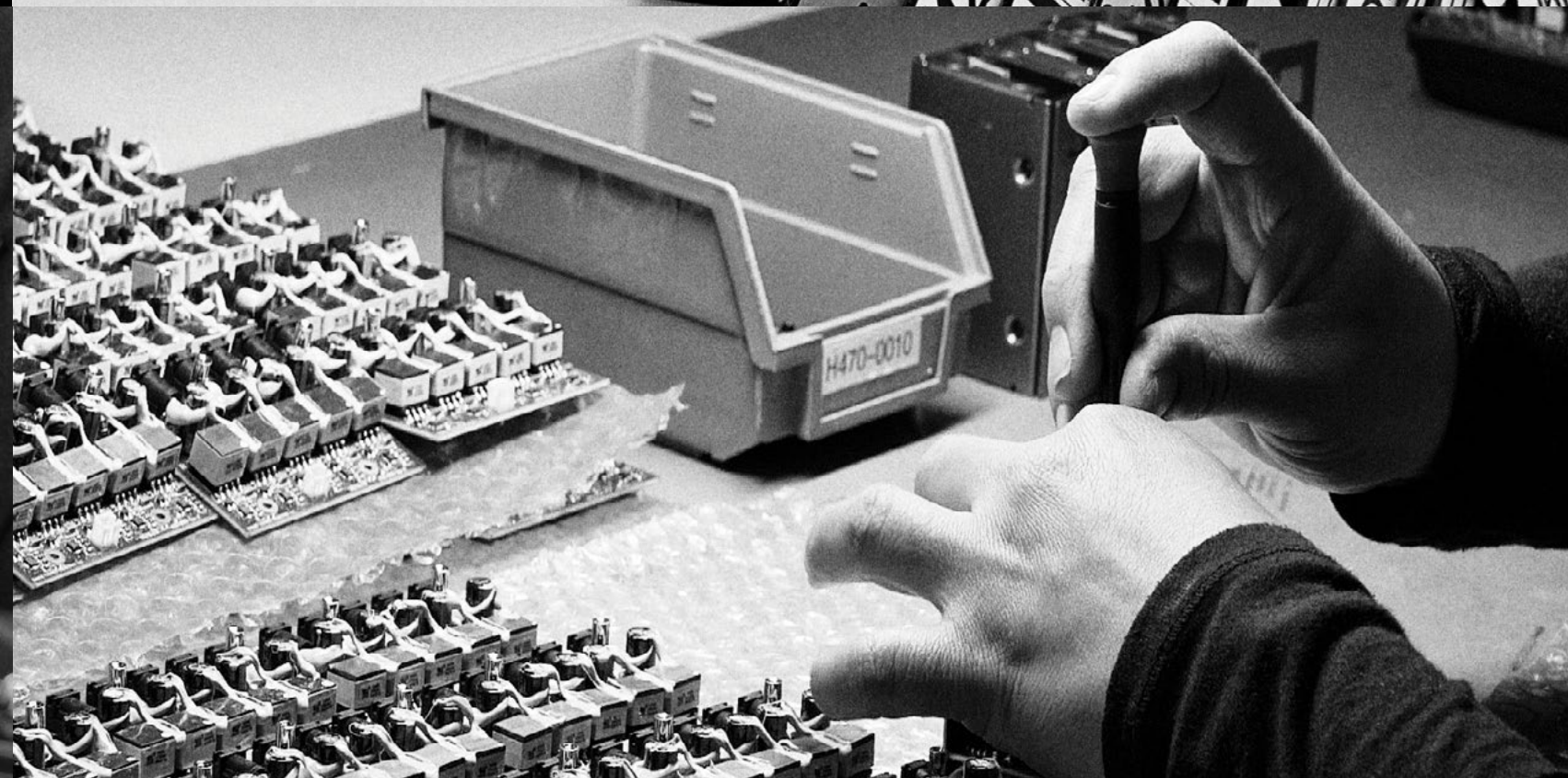
- Expression Pedal mode (green)
- Favorite Mode (amber)
- Tap mode (red)
- Infinite Mode (purple)
- MIDI mode (blue)

**NOTE:** The LED will change to reflect the any color noted above.

BACK TO TOP ▲



# strymon®



## LINKS

SUPPORT

CONTACT

NEWSLETTER

SITE

## SOCIAL



BACK TO TOP ▲



**strymon®**

**[www.strymon.net](http://www.strymon.net)**